



RETAIL FOR SALE OR LEASE

PROPERTY OVERVIEW

PRICE | \$1,500,000.00

LEASE PRICE | \$9,000 PER MONTH

LEASE TYPE | NNN

SQUARE FEET | 6,400 +/- SF

ACREAGE | 1.05 +/- ACRES

ZONING | CENTRAL BUSINESS

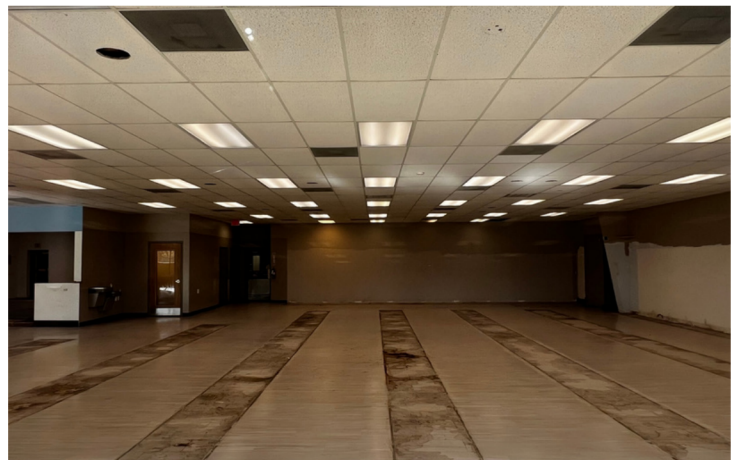
Prime retail opportunity: Previously occupied by a retail pharmacy, this versatile property is available for sale or lease and is strategically located on S Bennett Street in Downtown Southern Pines. Situated less than a mile from W Morganton Road and US-1, the 6,400 +/- square foot freestanding single-story building boasts expansive open floor space, drop ceilings, and a drive-thru, all set on 1.05 +/- acres. Ample off-street parking is complemented by signage opportunities along S Bennett Street, ensuring visibility and accessibility for prospective businesses.

GEORGE MANLEY
NC BROKER
C: 910.603.8395
GEORGE@CSGNC.COM

CAROLINA SUMMIT GROUP
235 E Pennsylvania Ave.
Southern Pines, NC 28387
910.684.5353
carolinasummitgroup.com

HOLLY BELL
NC BROKER
C: 910.690.1065
HOLLY@CSGNC.COM

PHOTOS

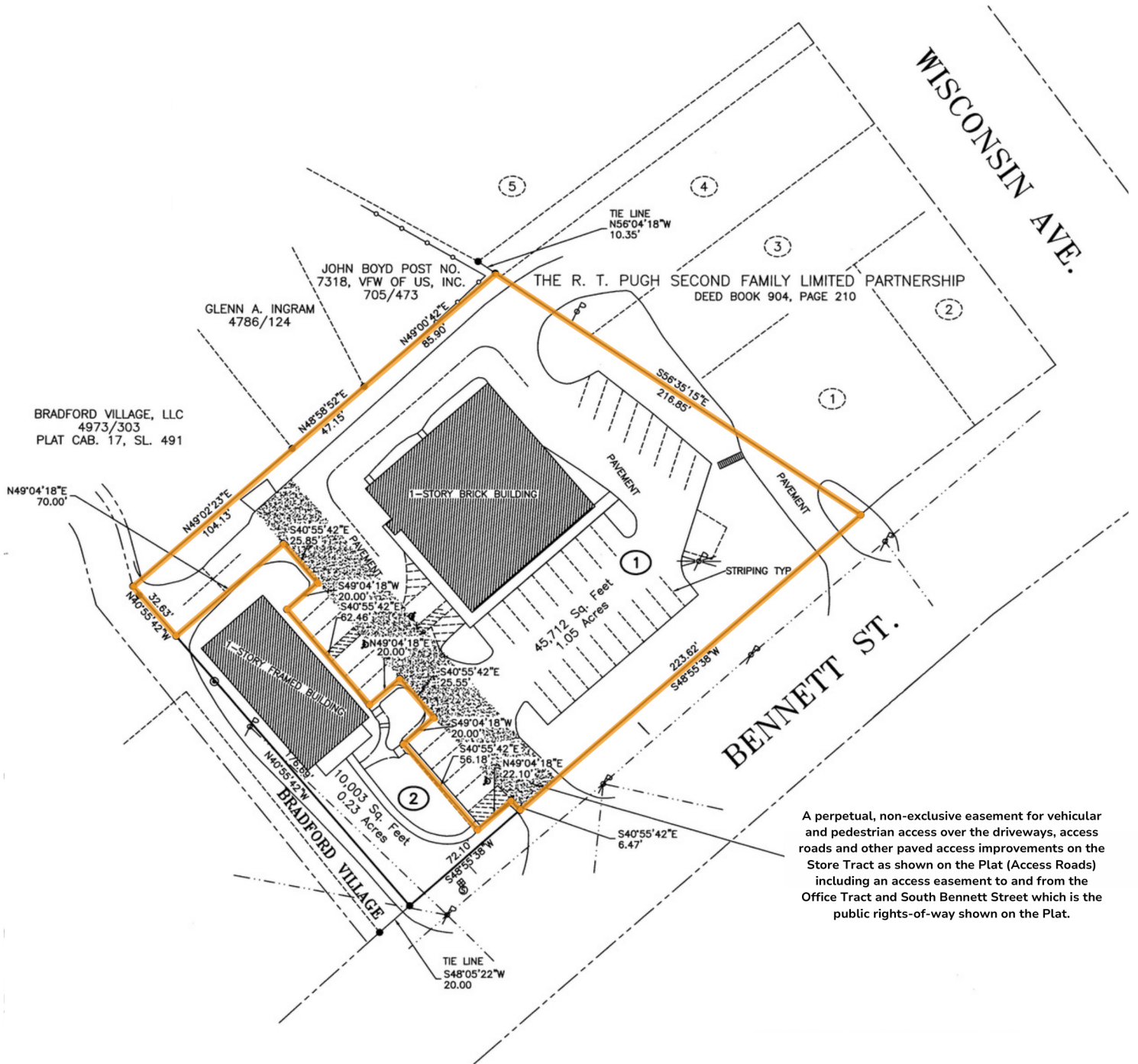


GEORGE MANLEY
NC BROKER
C: 910.603.8395
GEORGE@CSGNC.COM

CAROLINA SUMMIT GROUP
235 E Pennsylvania Ave.
Southern Pines, NC 28387
910.684.5353
carolinasummitgroup.com

HOLLY BELL
NC BROKER
C: 910.690.1065
HOLLY@CSGNC.COM

PLAT



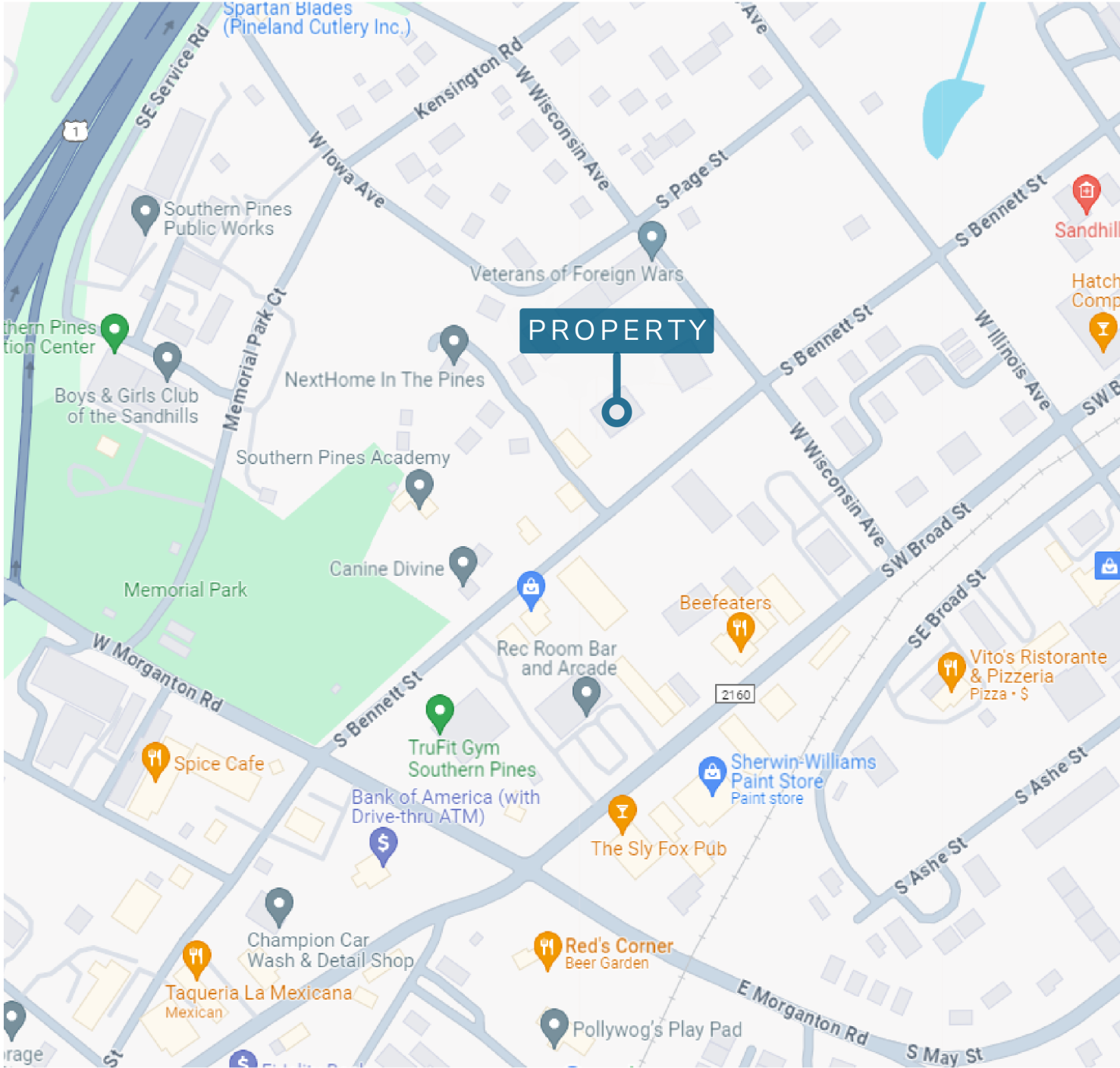
NOTE: Plat is for illustrative purposes only.
 Actual dimensions & details may vary.

GEORGE MANLEY
 NC BROKER
 C: 910.603.8395
 GEORGE@CSGNC.COM

CAROLINA SUMMIT GROUP
 235 E Pennsylvania Ave.
 Southern Pines, NC 28387
 910.684.5353
 carolinasummitgroup.com

HOLLY BELL
 NC BROKER
 C: 910.690.1065
 HOLLY@CSGNC.COM

RETAIL MAP

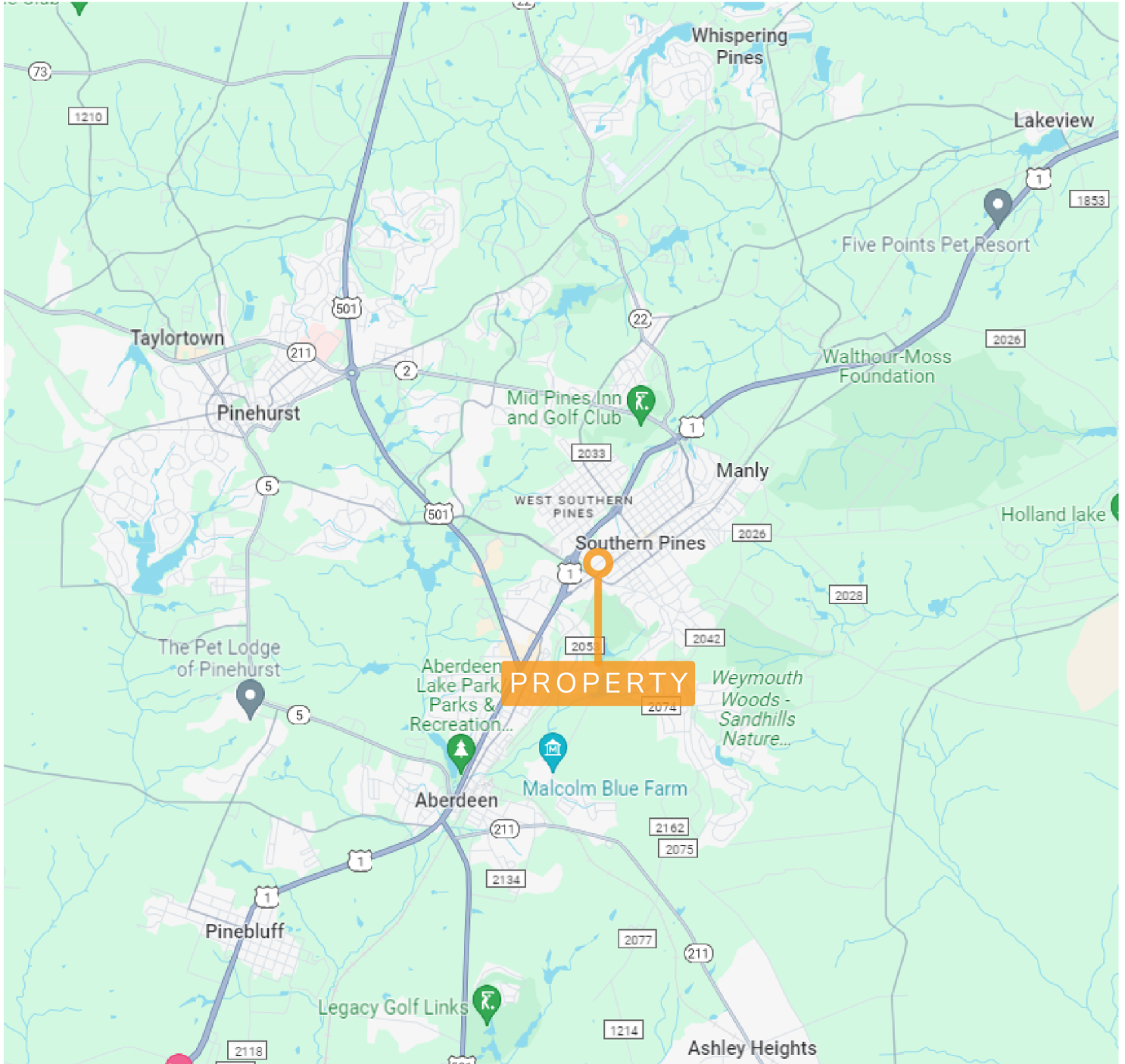


GEORGE MANLEY
NC BROKER
C: 910.603.8395
GEORGE@CSGNC.COM

CAROLINA SUMMIT GROUP
235 E Pennsylvania Ave.
Southern Pines, NC 28387
910.684.5353
carolinasmithgroup.com

HOLLY BELL
NC BROKER
C: 910.690.1065
HOLLY@CSGNC.COM

LOCATION MAP



GEORGE MANLEY
NC BROKER
C: 910.603.8395
GEORGE@CSGNC.COM

CAROLINA SUMMIT GROUP
235 E Pennsylvania Ave.
Southern Pines , NC 28387
910.684.5353
carolinasummitgroup.com

HOLLY BELL
NC BROKER
C: 910.690.1065
HOLLY@CSGNC.COM