



LAND FOR SALE ON US HWY 15-501

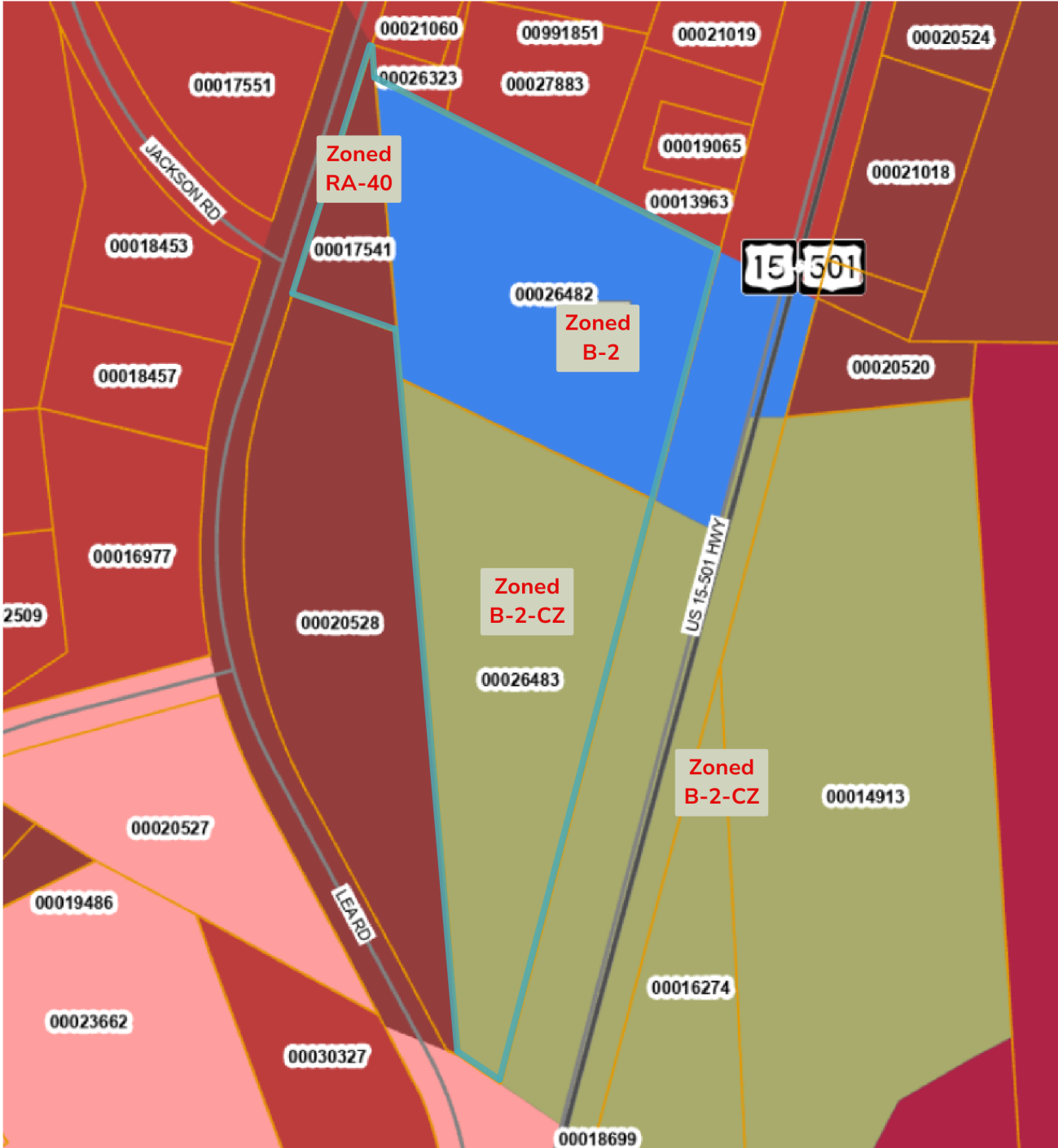
PROPERTY OVERVIEW

PRICE \$880,000.00	
PARCEL ID	00026482, 00026483, 00017541
ACREAGE 9.83 +/- ACRES	
ZONING	B-2 & B-2-CZ & RA-40 HIGHWAY CORRIDOR OVERLAY DISTRICT

Land for sale on US Hwy 15-501 in West End near the intersection of Lea Road. Property features 3 parcels with a total 9.83 +/- deeded acres. Parcels have various zoning including B-2 (Highway Commercial District), B-2-CZ (Highway Commercial District Conditional Zoning), and RA-40 (Residential and Agricultural – 40 District). Portion of property is within Highway Corridor Overlay District Urban Transition 15-501. Buyer to confirm permitted uses with Moore County Zoning. No value given to structures on property.

The information contained herein has been obtained through sources deemed reliable but cannot be guaranteed as to its accuracy. Any information of special interest should be obtained through independent verification.

ZONING

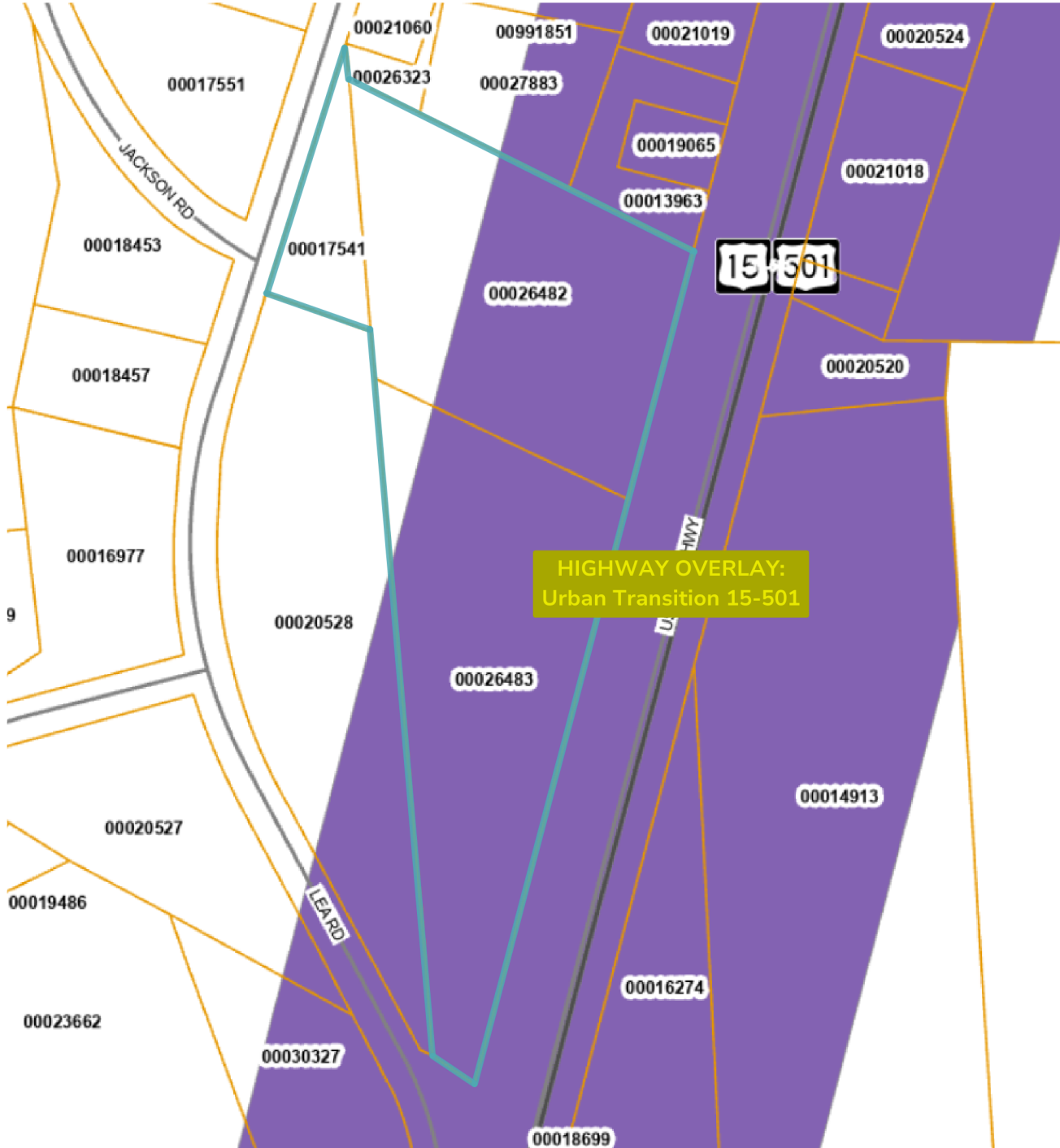


HOLLY BELL
 NC BROKER
 C: 910.690.1065
 HOLLY@CSGNC.COM

CAROLINA SUMMIT GROUP
 235 E Pennsylvania Ave.
 Southern Pines, NC 28387
 910.684.5353
 carolinasummitgroup.com

GEORGE MANLEY
 NC BROKER
 C: 910.603.8395
 GEORGE@CSGNC.COM

HIGHWAY CORRIDOR OVERLAY

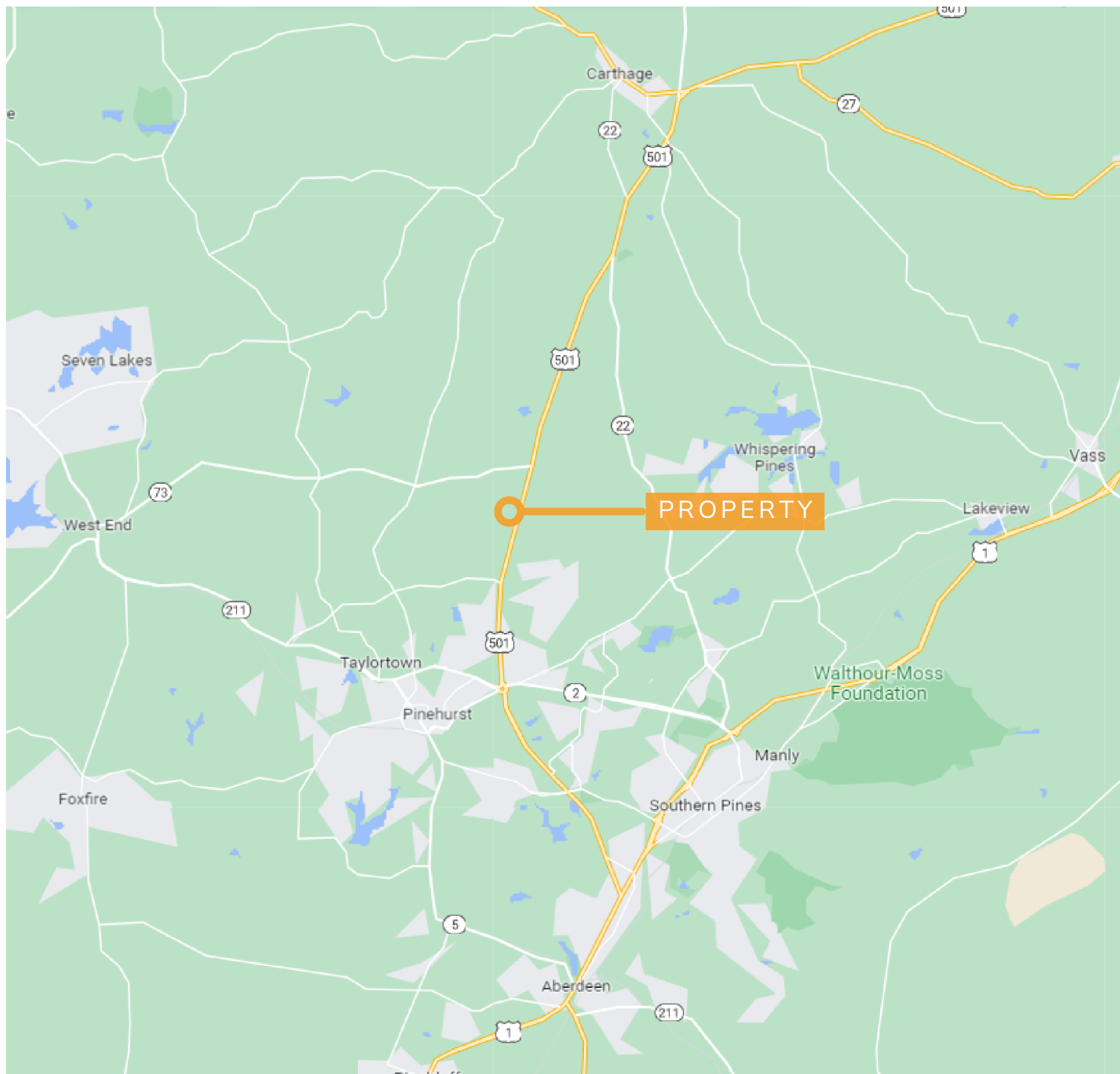


HOLLY BELL
 NC BROKER
 C: 910.690.1065
 HOLLY@CSGNC.COM

CAROLINA SUMMIT GROUP
 235 E Pennsylvania Ave.
 Southern Pines, NC 28387
 910.684.5353
 carolinasummitgroup.com

GEORGE MANLEY
 NC BROKER
 C: 910.603.8395
 GEORGE@CSGNC.COM

LOCATION MAP



HOLLY BELL
NC BROKER
C: 910.690.1065
HOLLY@CSGNC.COM

CAROLINA SUMMIT GROUP
235 E Pennsylvania Ave.
Southern Pines, NC 28387
910.684.5353
carolinasummitgroup.com

GEORGE MANLEY
NC BROKER
C: 910.603.8395
GEORGE@CSGNC.COM